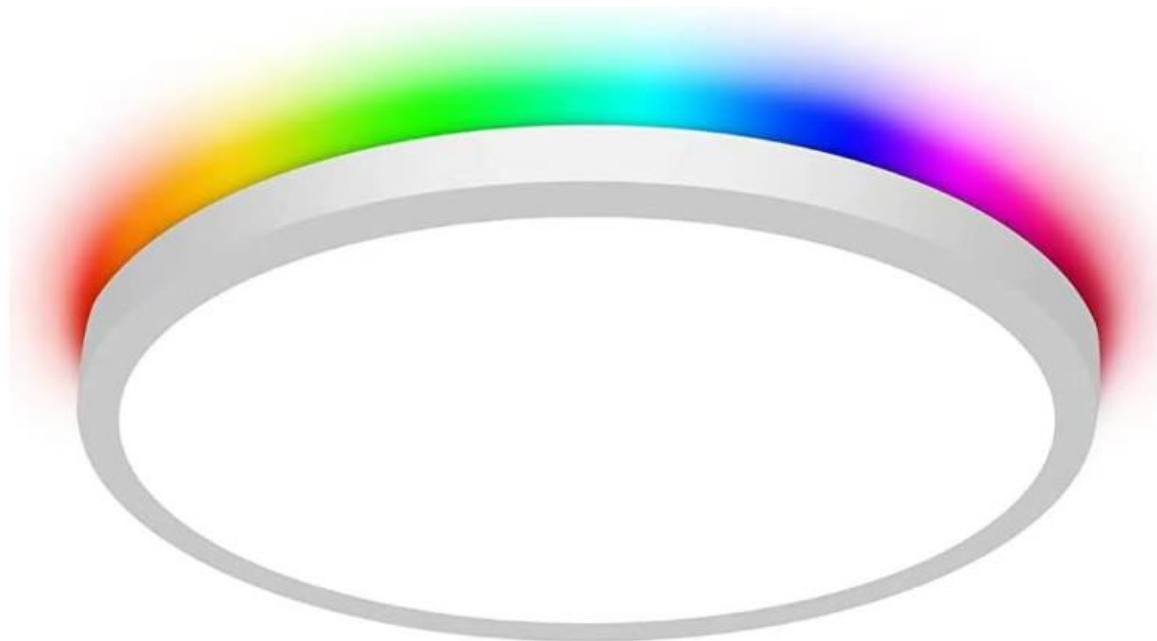


2.4G Remote Bluetooth RGBCW LED Flush Mount Panel

YG Mold No.: YG010





SHENZHEN YOUTH GREEN LIGHTING TECHNOLOGY CO.,LTD.

ADD: YOUTHGREEN COMMERCIAL PARK,SHIYAN TOWN BAOAN DISTRICT,SHENZHEN CITY,GUANGDONG PROVINCE,CHINA.

WhatsApp: 86 13272474817; Email:sales07@youthgreenled.com; Web: www.youthgreenled.com


Specification:

Model No.	Size	Wattage	Voltage	Beam Angle	Color Temperature	Dimmable	Certificate
YG010G18-R-5L-2.4G	9"	18W	AC120V	180D	2000K-6000K RGB	YES	ETL/cETL
YG010H24-R-5L-2.4G	12"	24W	AC120V	180D	2000K-6000K RGB	YES	ETL/cETL
YG010K30-R-5L-2.4G	15"	30W	AC120V	180D	2000K-6000K RGB	YES	ETL/cETL

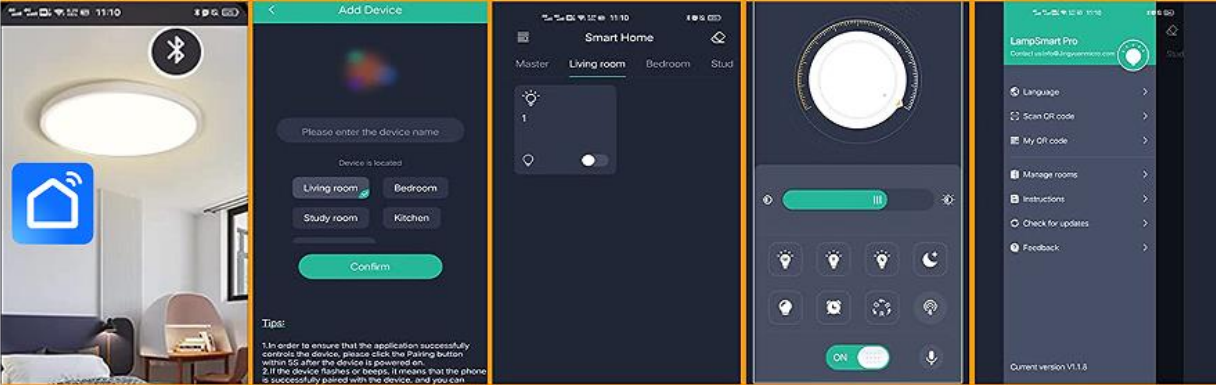
Feature - 01: 2.4G Remote Control



Feature - 02: Bluetooth App control



HOW TO USE APP CONTROL



1. Open "Smart Life" App and open the Bluetooth
2. Add a device and set the device name
3. Click the device to enter the control interface
4. Press the pairing button within 5 seconds after turning on the light, the light flashes once, and the pairing is complete
5. Use another mobile phone to scan the QR code in the menu can control the lights at the same time

Feature - 03: Wide Color Temperature 2000K-6000K for Main Light



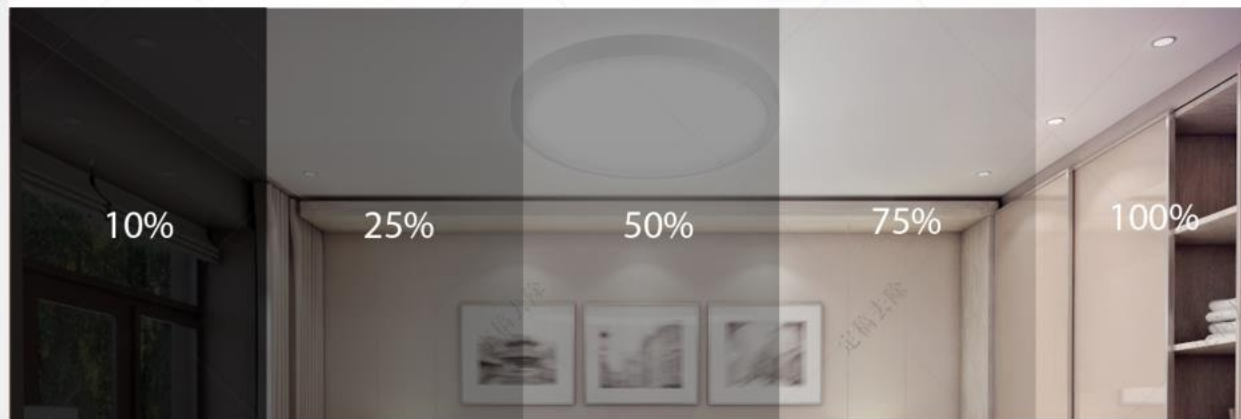
Warm White

Neutral Light

Daylight White



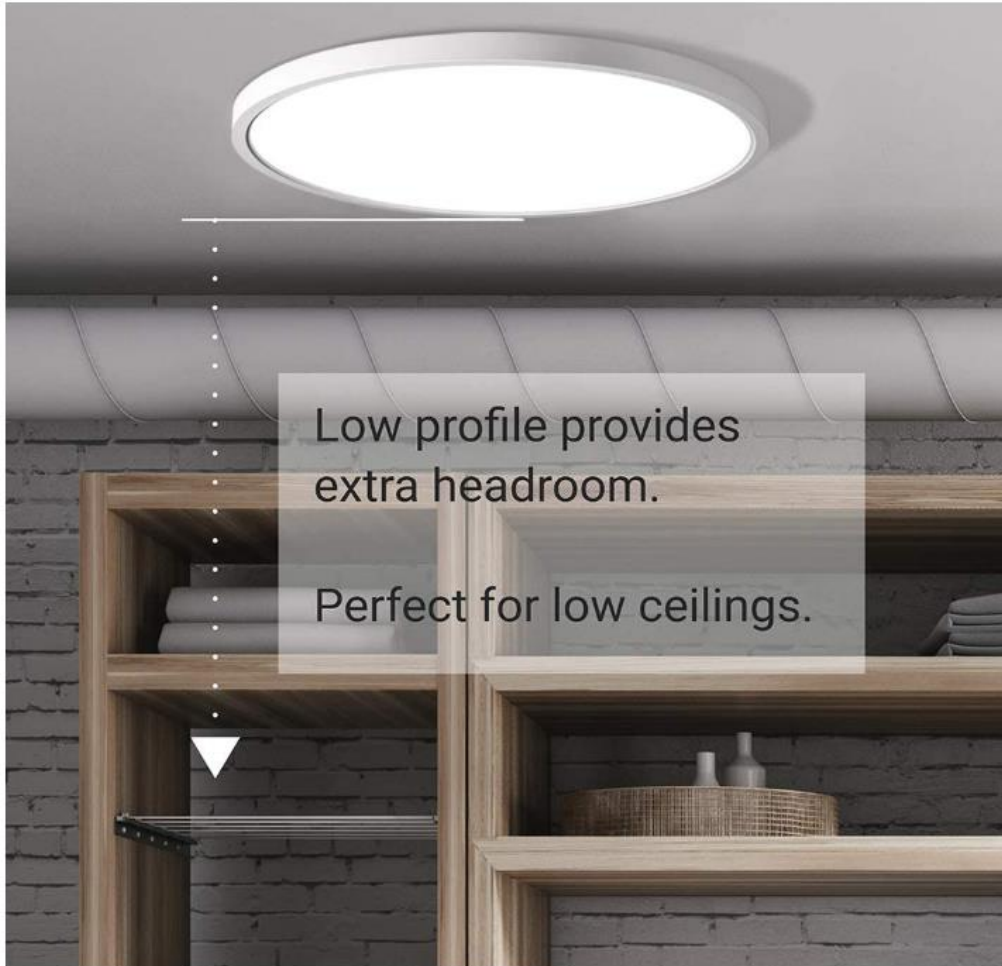
Front light color temperature 2000K-6000K adjustable



Feature - 04: Colorful Backlight



Feature - 05: Low profile design



Low profile provides extra headroom.

Perfect for low ceilings.

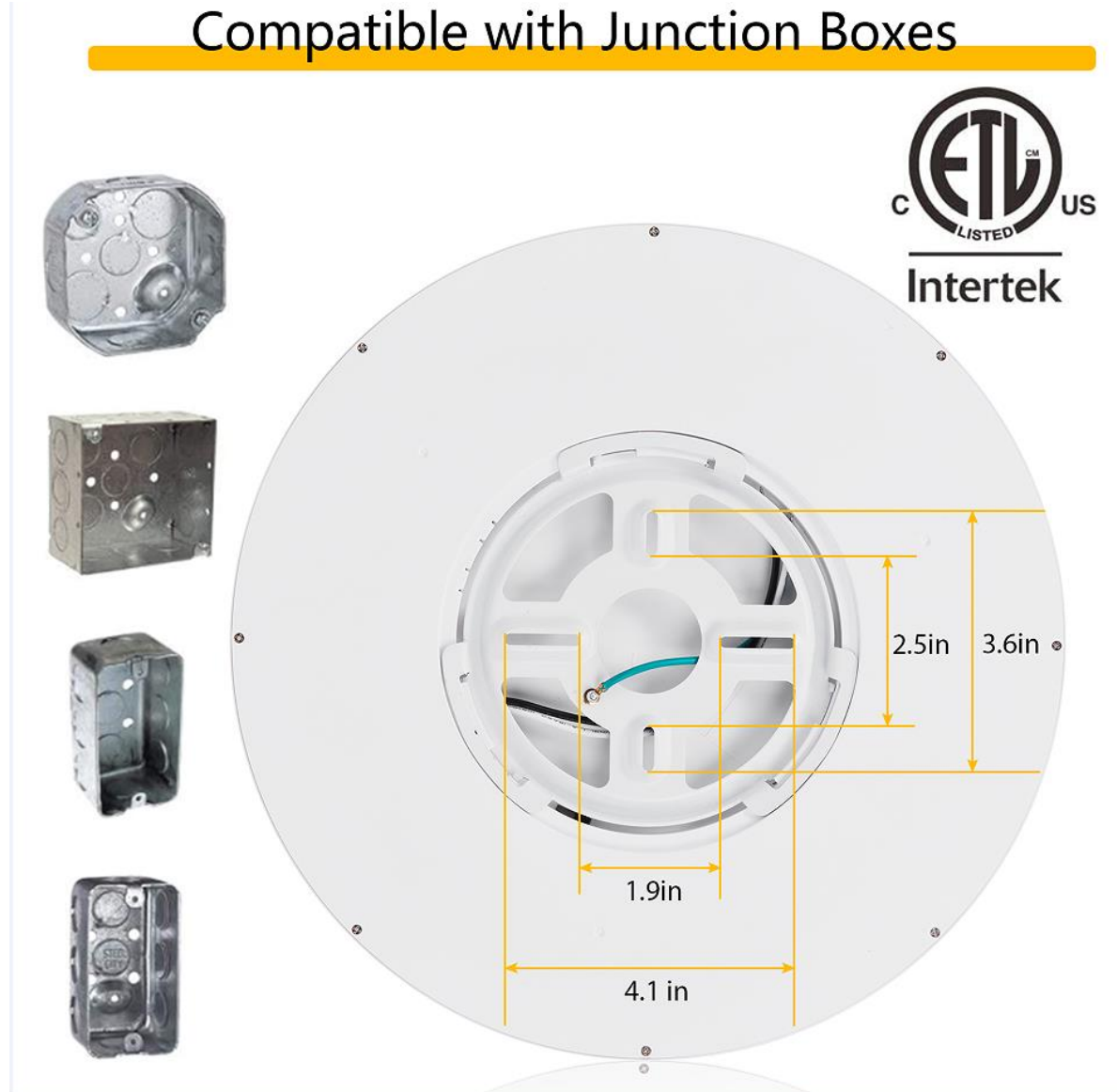


Ultra thin design
0.94 Inch Only

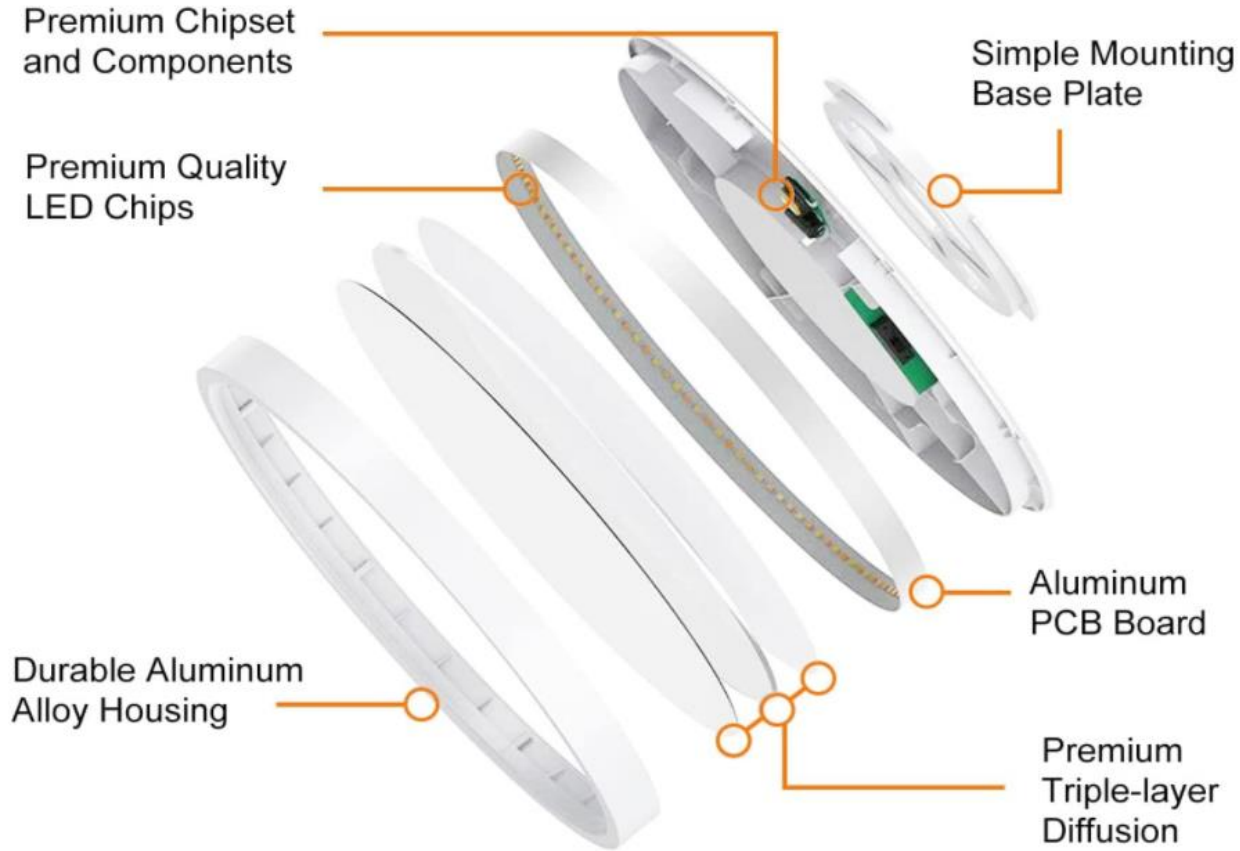
11.8 Inch

Simple Look
GOOD Look

Focus On EASY Design

Feature - 06: Compatible with different Junction Boxes

Feature - 07: Inner Structures



Second Generation



Brighter LED Chips



Durable Construction



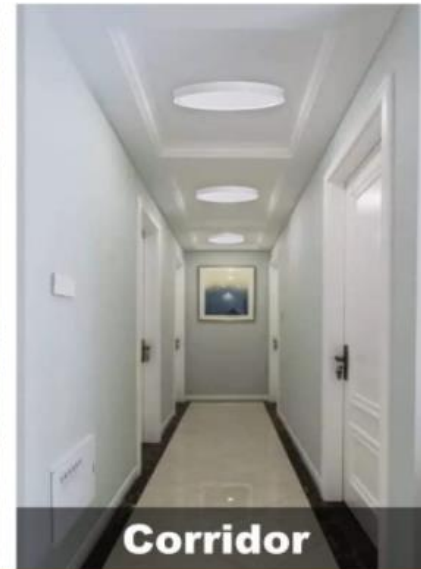
5 Years Warranty



Certified

Feature - 08: Easy Installation

Feature – 09 Application



Wide Applications

