

# Linear High Bay

## Product Catalog

5 years  
warranty

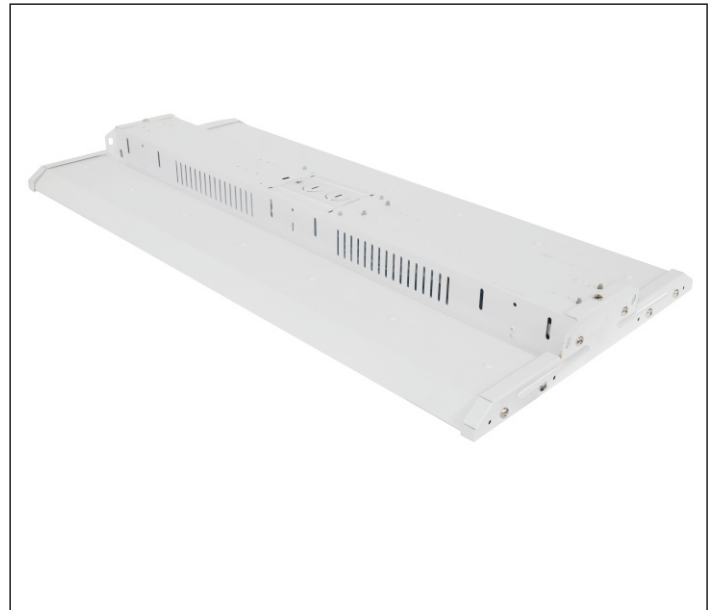
150 LM/W

IP65



## ● Product Description

Material: Metal  
 Dimmer brand: Leviton—IP710-LFZ  
 Lutron—NTSTV  
 Super Bright SMD2835 LEDs, LM80 rated Ra>80  
 IP Rating: IP40  
 Operating temperature: -20°C to 50°C  
 Lumen output: 135LM/W  
 PF>0.9, THD≤20 %  
 AC120-277V&AC120-347V&AC277-480V  
 Strobe less than 30%, in line with T-24  
 5 years warranty



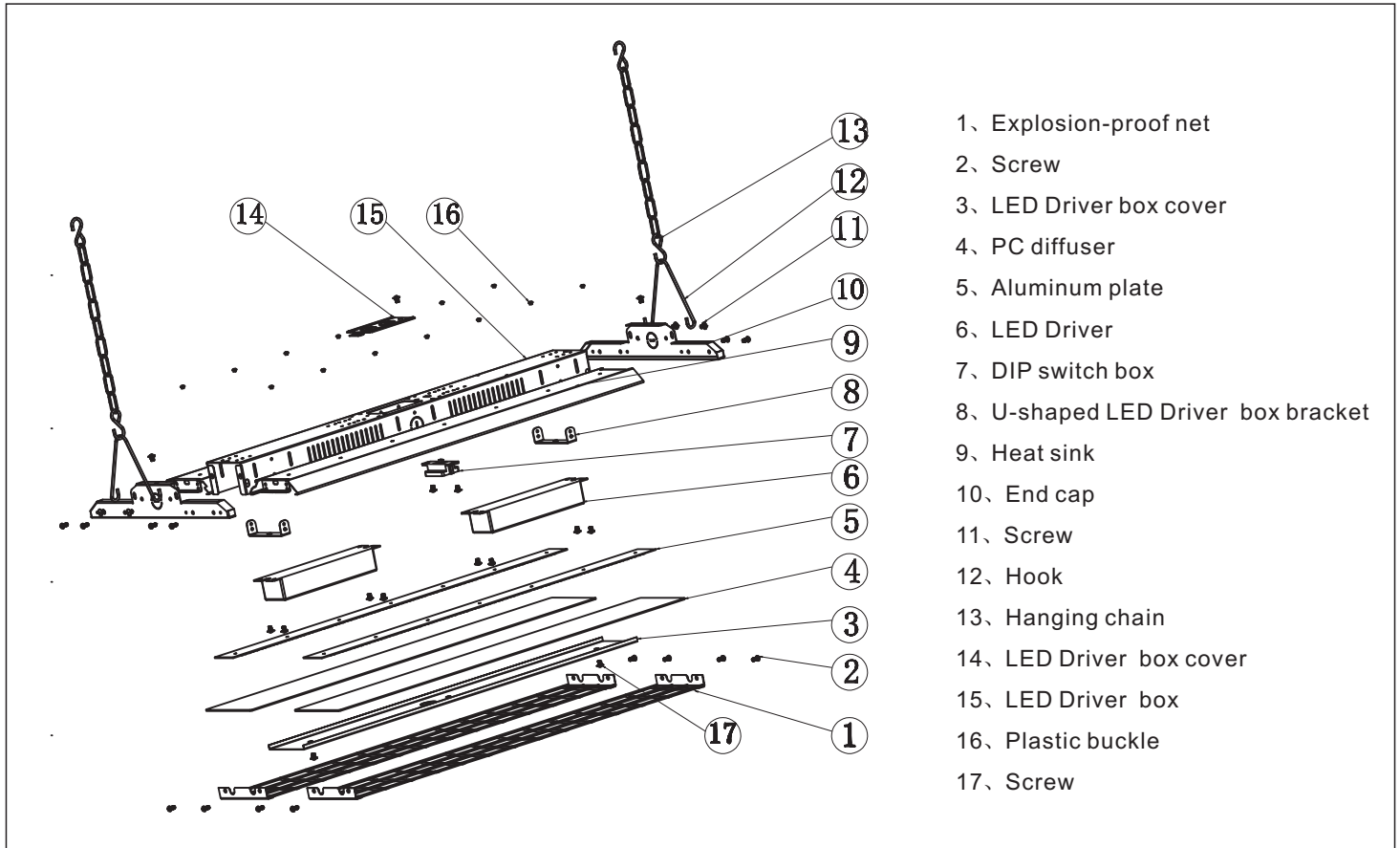
## ● Dimensions

02-110W	24.7*11.8*1.9inch & 24.7*12.8*2.1inch
02-165W	
02-220W	24.7*14.2*1.9inch & 24.7*15.2*2.1inch
03-320W	35.7*15.2*2.1inch
04-165W	47.5*12.8*2.1inch
04-220W	
04-320W	

## ● Accessories (optional)

Emergency LED Driver	Microwave sensor
LED Driver	

## ● Structure



## ● Advantages

### Compared with Other Flat Linear High Bay

Item	YG Flat Linear High Bay	Other Flat Linear High Bay
<b>Heat Dissipation</b>	Iron shell-save cost effectively	Aluminum shell, the material is more expensive, increasing the cost
<b>Diffuser</b>	Anti-glare lens-protect your eyes	No anti-glare function, harmful to eyes
<b>Driver Cover</b>	Front-facing driver-easy to maintenance	The driver supply cover is behind, troublesome maintenance
<b>Function</b>	Infrared sensor and microwave motion sensor are available, users could select the appropriate sensor according to different installation environment.	Some manufacturers are unable to customize the motion sensor and can only choose single function sensor.

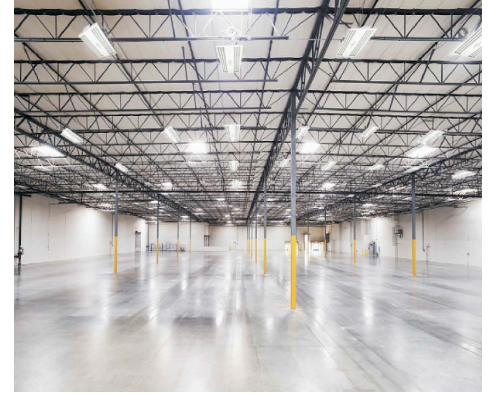
## ● Applications



Workshop

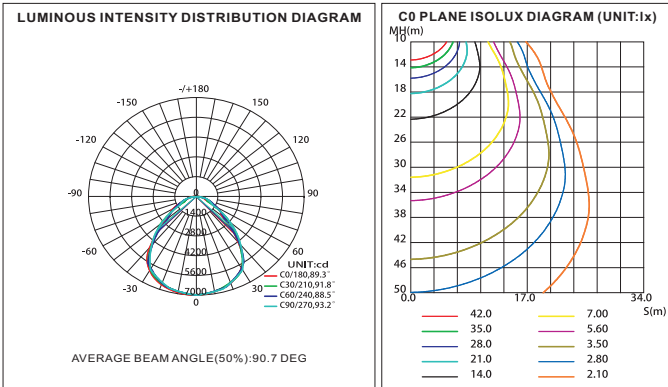


Warehouse

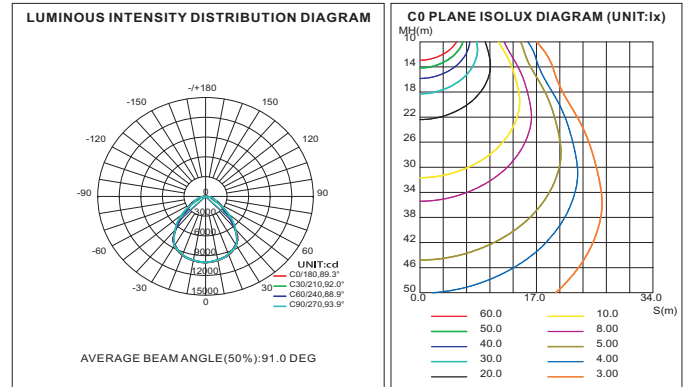


Indoor parking

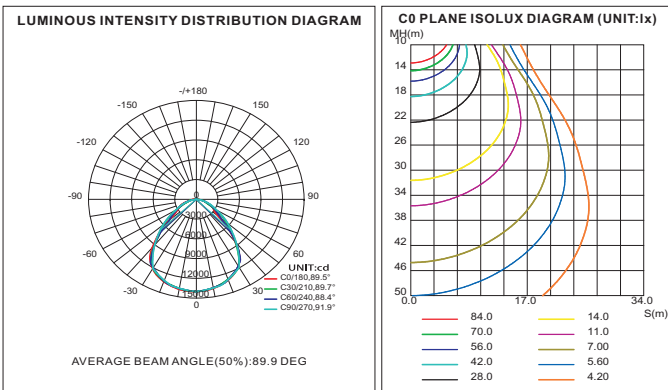
### 24.7\*11.8\*1.9inch 110W 4000K



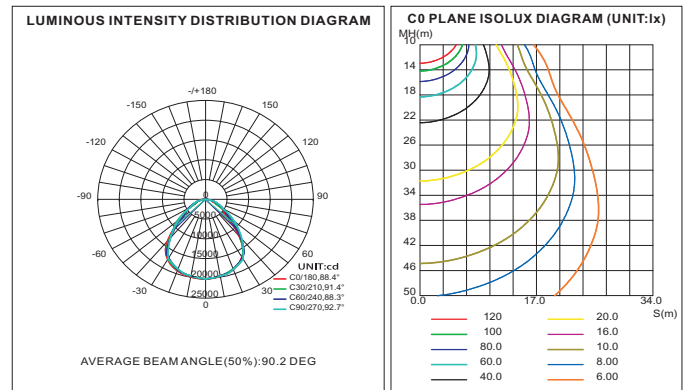
### 24.7\*11.8\*1.9inch 165W 4000K



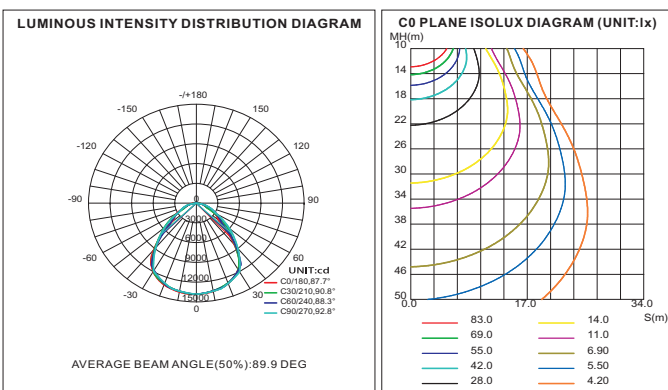
### 24.7\*14.2\*1.9inch 220W 4000K



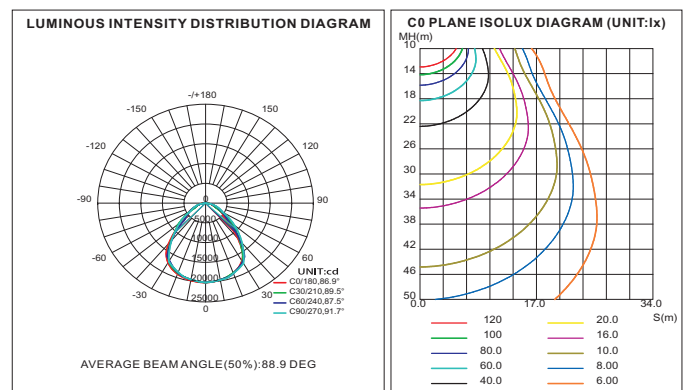
### 35.7\*15.2\*2.1inch 220W 4000K



### 47.5\*12.8\*2.1inch 220W 4000K



### 47.5\*12.8\*2.1inch 320W 4000K



## ● Ordering information

### Parameter

#### Regular Series

Model No.	Watts (W)	Input Voltage	Efficacy	CCT (K)	Size (inch)	N.W (lbs)
YG017LHB110-X-DM	110	AC120-277V or AC120-347V	135LM/W	3000 3500 4000 5000 5700	24.7*11.8*1.9	7.4
YG017LHB165-X-DM	165					
YG017LHB220-X-DM	220				24.7*14.2*1.9	8.6
YG017LHB320-X-DM	320					
YG017LHB165-X-DM	165				35.7*15.2*2.1	13.2
YG017LHB220-X-DM	220					
YG017LHB320-X-DM	320					
					47.5*12.8*2.1	14.8
						15.9

PS:III=

DM	Dimming function	ED	Dimming+Emergency function
SD	Dimming+Sensing function	SED	Dimming+Sensing+Emergency function
L/M	L: AC120-277V M: AC120-347V		
FF=3000K / 3500K / 4000K / 5000K / 5700K			

Model No.	Watts (W)	Input Voltage	Efficacy	CCT (K)	Size (inch)	N.W (lbs)
YG017LHB110-X-DM	110	AC277-480V	135LM/W	3000 3500 4000 5000 5700	24.7*12.8*2.1	7.6
YG017LHB165-X-DM	165					
YG017LHB220-X-DM	220				24.7*15.2*2.1	8.6
YG017LHB320-X-DM	320					
YG017LHB165-X-DM	165				35.7*15.2*2.1	13.2
YG017LHB220-X-DM	220					
YG017LHB320-X-DM	320					
					47.5*12.8*2.1	14.8
						15.9

PS:III=

DM	Dimming function	ED	Dimming+Emergency function
SD	Dimming+Sensing function	SED	Dimming+Sensing+Emergency function
H= AC277-480V			
FF=3000K / 3500K / 4000K / 5000K / 5700K			

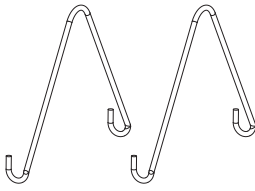
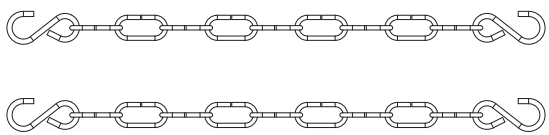
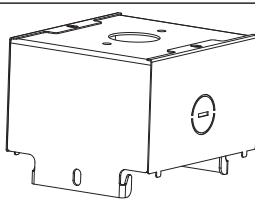
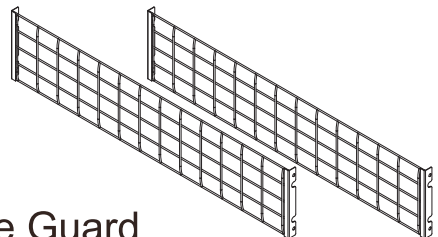
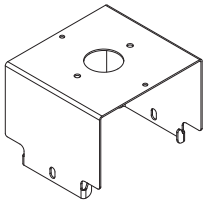
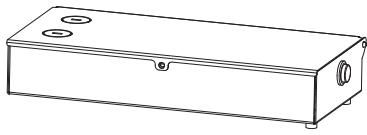
## Packaging Information

Model No.	Watts (W)	N.W (lbs)	Carton Size (inch)	QTY/ctn(pcs)	G.W (lbs)	Qty loaded by 20GP	Qty loaded by 40GP	Qty loaded by 40HQ
YG017LHB110-X-DM	110	7.4	28.3*14.2*7.3	2	16.9	840 PCS	1680 PCS	2040 PCS
YG017LHB165-X-DM	165	7.4	28.3*14.2*7.3	2	16.9	840 PCS	1680 PCS	2040 PCS
YG017LHB220-X-DM	220	8.6	28.3*16.5*7.3	2	19.6	640 PCS	1280 PCS	1560 PCS
YG017LHB320-X-DM	320	13.2	39.2*17.5*4.9	1	17.4	680 PCS	1360 PCS	1600 PCS
YG017LHB165-X-DM	165	14.8	51.0*15.2*5.1	1	15.3	700 PCS	1440 PCS	1680 PCS
YG017LHB220-X-DM	220	15.9	51.0*15.2*5.1	1	16.4	700 PCS	1440 PCS	1680 PCS
YG017LHB320-X-DM	320	15.9	51.0*15.2*5.1	1	16.6	700 PCS	1440 PCS	1680 PCS

Model No.	Watts (W)	N.W (lbs)	Carton Size (inch)	QTY/ctn(pcs)	G.W (lbs)	Qty loaded by 20GP	Qty loaded by 40GP	Qty loaded by 40HQ
YG017LHB110-X-DM	110	7.6	28.3*15.2*7.9	2	17.5	760 PCS	1520 PCS	1880 PCS
YG017LHB165-X-DM	165	7.6	28.3*15.2*7.9	2	17.9	760 PCS	1520 PCS	1880 PCS
YG017LHB220-X-DM	220	8.6	28.3*17.5*7.9	2	20.6	640 PCS	1280 PCS	1440 PCS
YG017LHB320-X-DM	320	13.2	39.2*17.5*4.9	1	17.9	680 PCS	1360 PCS	1600 PCS
YG017LHB165-X-DM	165	14.8	51.0*15.2*5.1	1	16.2	700 PCS	1440 PCS	1680 PCS
YG017LHB220-X-DM	220	15.9	51.0*15.2*5.1	1	17.3	700 PCS	1440 PCS	1680 PCS
YG017LHB320-X-DM	320	15.9	51.0*15.2*5.1	1	17.5	700 PCS	1440 PCS	1680 PCS

● **Installation Guide**

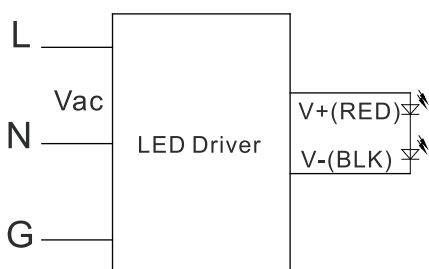
**Package Contents**

Description	Quantity(set)
Standard	
LED High Bay Fixture	1
User Manual	1
 Suspending Hook	 Hanging Chain
Optional	
 Pendant Mounting Bracket	 Wire Guard
 Surface Mounting Bracket	 Emergency-Kit

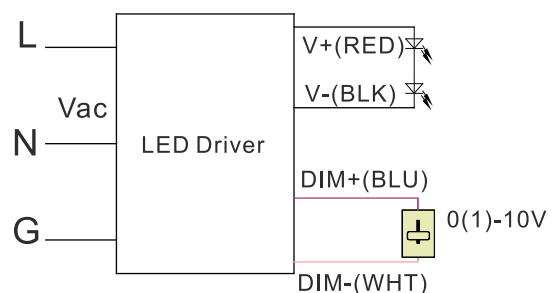
**Electrical Schematic Diagram**

**Without any function,0(1)-10V Dimming wiring diagram**

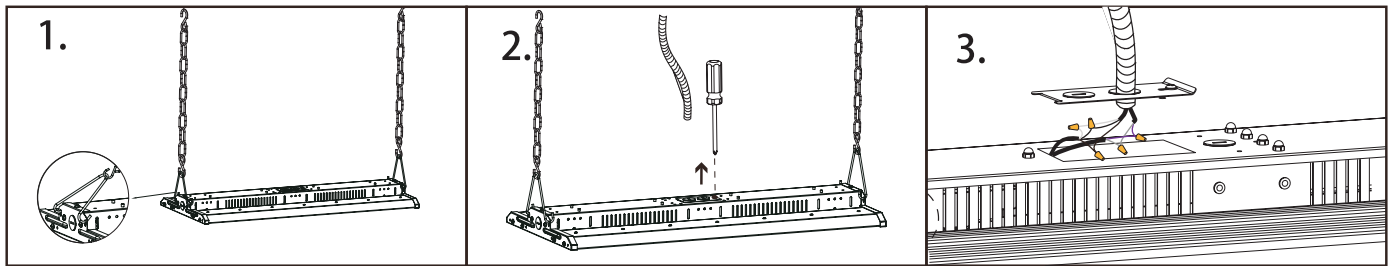
Without any function



0(1)-10V Dimming

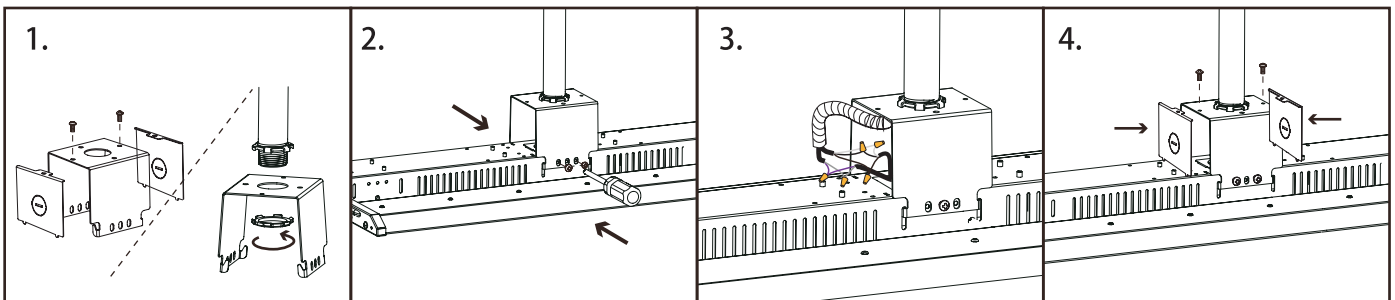


## Installation method of hanging chain



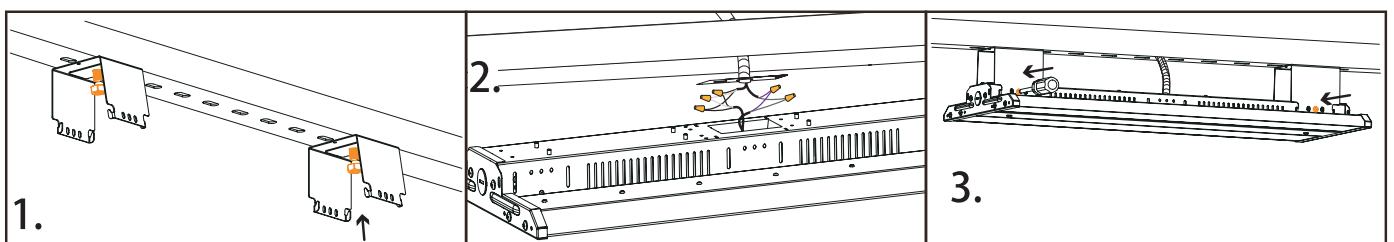
1. Take out the lamp and installation accessories. ( steel wire\*2 / hanging chain\*2)
2. First buckle the steel wire on the chain, then let the steel wire clip into the hole of the power box at the back of the lamp
3. Hanging the chain on the suspending hook to complete the installation.

## Installation method of circular pipe



1. Take out the lamp and installation accessories.( ceiling box / circular pipe / i-type bracket / gasket / spring / gasket / nut\*2 / screw\*3) first fix the ceiling base on the wall with screws, then screw the circular pipe on the ceiling base, and then screw the nut on the circular pipe.
2. First put the i- bracket on the circular pipe, then fixed with gasket / spring gasket and nut.
3. Stuck the lamp on the i-bracket to complete the installation.

## Installation method of ceiling mounting



1. Take out the lamp and installation accessories.(i-type bracket/ screw\*4)
2. Fix the i-bracket on the power supply with 4 screws.
3. Stuck the lamp on the i-bracket to complete the installation.



## Please read these instructions completely and carefully before installation

### **WARNING**

- Turn power off before inspection, installation or removal.
- Properly ground electrical enclosure.
- Follow all NEC and local codes.
- Use only UL or IEC approved wire for input/output connections.

## Prepare Electrical Wiring

### Electrical Requirements

The LED driver must be supplied with 120-277VAC & AC120-347VAC & 277-480VAC , 50/60 Hz per product label and connected to an individual properly grounded branch circuit, protected by a 15 or 20 ampere circuit breaker.

### Grounding Instructions

The grounding and bonding of the overall system shall be done in accordance with National Electric Code (NEC) Article 600 and local codes.

## Announcements:

1. This equipment is a professional installation. Non-professional personnel shall not remove or install the equipment.
2. To avoid damage, falling, electric shock or fire, please do not modify the lamp or replace accessories without confirming with the supplier.
3. Maintenance/installation and replacement the lamps, please confirm to cut off the power supply, and the lamps have set up a cooling. Please make sure the lamps have been properly installed before processing power.
4. Ensure the accurate and reliable connection.
5. Ensure that the product around the vent, the lamp cannot violate any fire.